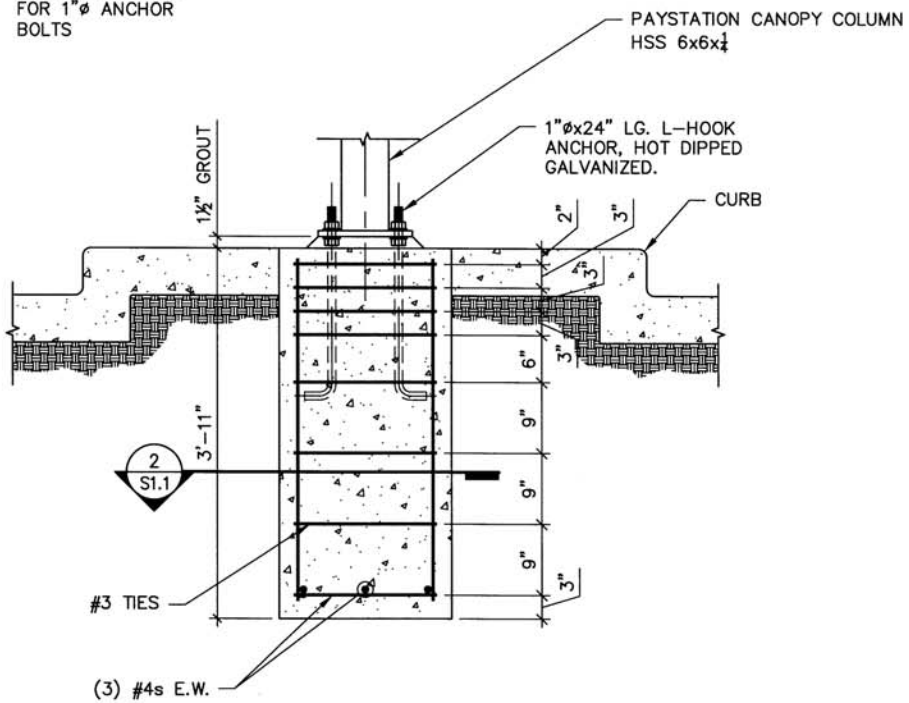


2
SECTION
S1.1 SCALE: 3/4" = 1'-0"

1 1/8" Ø DRILL THRU FOR 1" Ø ANCHOR BOLTS



1
FOUNDATION
S1.1 SCALE: 3/4" = 1'-0"

CAST-IN-PLACE CONCRETE

1. COMPLY WITH ASTM C94; ACI 301, "SPECIFICATIONS FOR STRUCTURAL CONCRETE FOR BUILDINGS"; ACI 318, "BUILDING CODE REQUIREMENTS FOR STRUCTURAL CONCRETE"; AND CRSI'S "MANUAL OF STANDARD PRACTICE."
2. REINFORCING BARS SHALL NOT BE SPLICED.
3. DEFORMED REINFORCING BARS: ASTM A615, GRADE 60.
4. PORTLAND CEMENT: ASTM C150, TYPE 1.
5. FLY ASH: ASTM C618, TYPE F (LIMITED TO 15 PERCENT OF TOTAL CEMENT CONTENT).
6. PROPORTION NORMAL-WEIGHT CONCRETE MIXES TO PROVIDE THE FOLLOWING PROPERTIES:
A. COMPRESSIVE STRENGTH: 3000 PSI AT 28 DAYS FOR BUILDING FOUNDATIONS AND FOOTINGS.
7. DO NOT ADD WATER TO CONCRETE DURING DELIVERY, AT PROJECT SITE, OR DURING PLACEMENT, UNLESS APPROVED BY ENGINEER.
8. PROTECT CONCRETE FROM PHYSICAL DAMAGE OR REDUCED STRENGTH DUE TO WEATHER EXTREMES DURING MIXING, PLACING, AND CURING. REPAIR SURFACE DEFECTS AS REQ'D.
9. PAY STATION CANOPY STRUCTURE SHALL BE ITEM PSC FURNISHED BY TSS SMART IDEAS FOR CAR WASHES, 11450 STEPHENS ROAD, WARREN, MI.
10. CANOPY SHALL BE INSTALLED IN ACCORDANCE WITH MANUFACTURERS INSTRUCTIONS AND SPECIFICATIONS.



6-9-2011

KRYSTAL BLUE CAR WASH
200 HENDERSONVILLE RD.
ASHEVILLE, NC
PAY STATION CANOPY AND FDN.

Dean & Associates, Inc.
ENGINEERING AND CONSTRUCTION SERVICES
15 Forge Valley Drive - Unit 1
Mills River, NC 28759
Phone: 828-890-4606 Fax: 828-890-4610

Project No.
11071

File Name:
Drawn By: RDC
Checked By: JRD
Issue Date: 5/9/11

Sheet No.
S1.1
1 of 1

