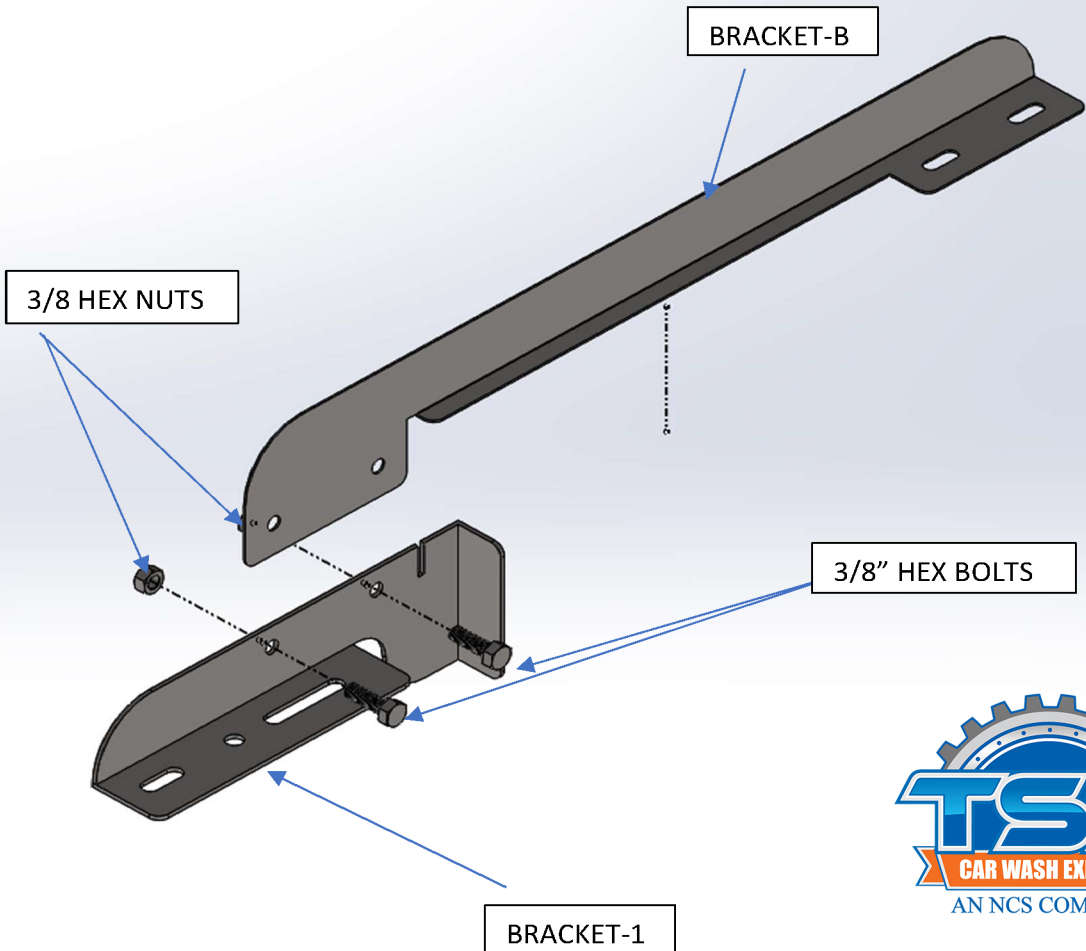
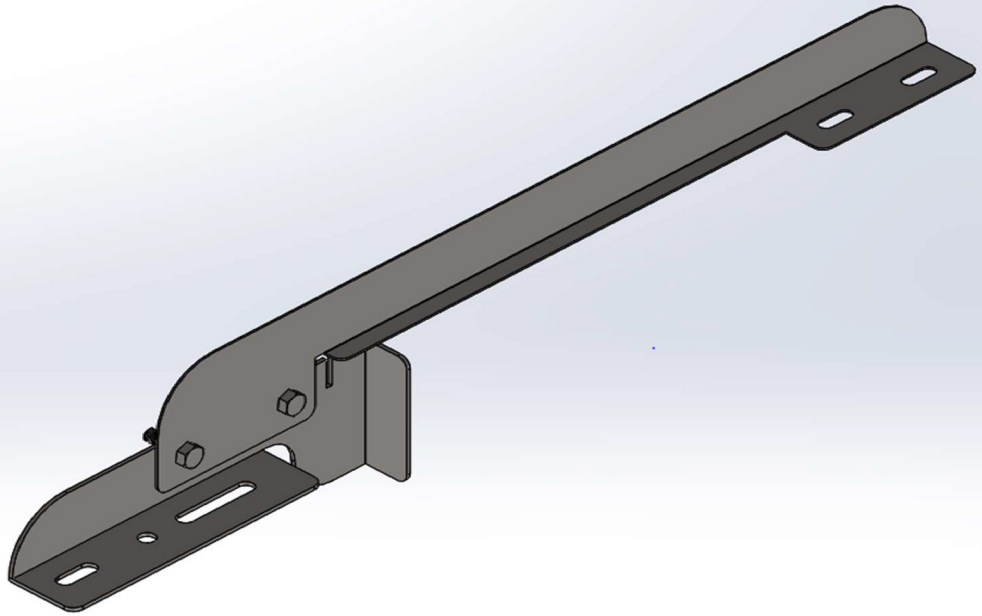
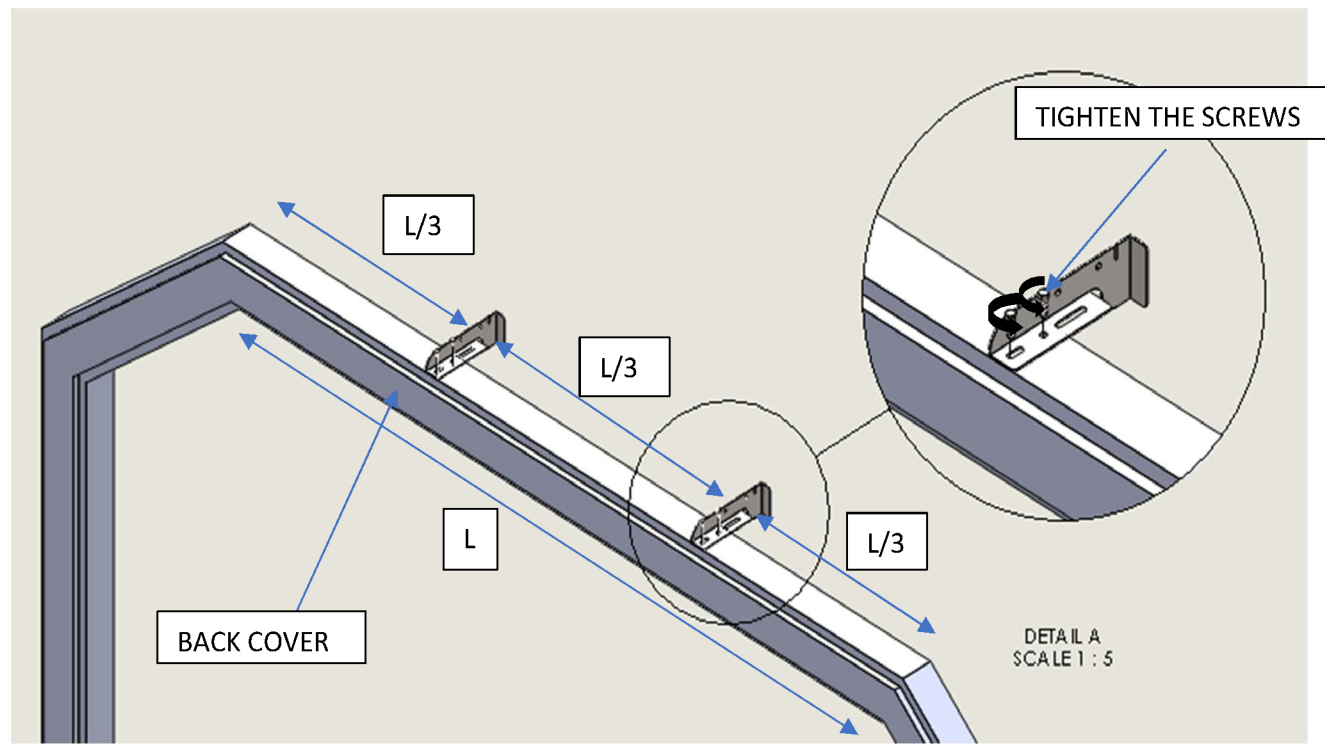


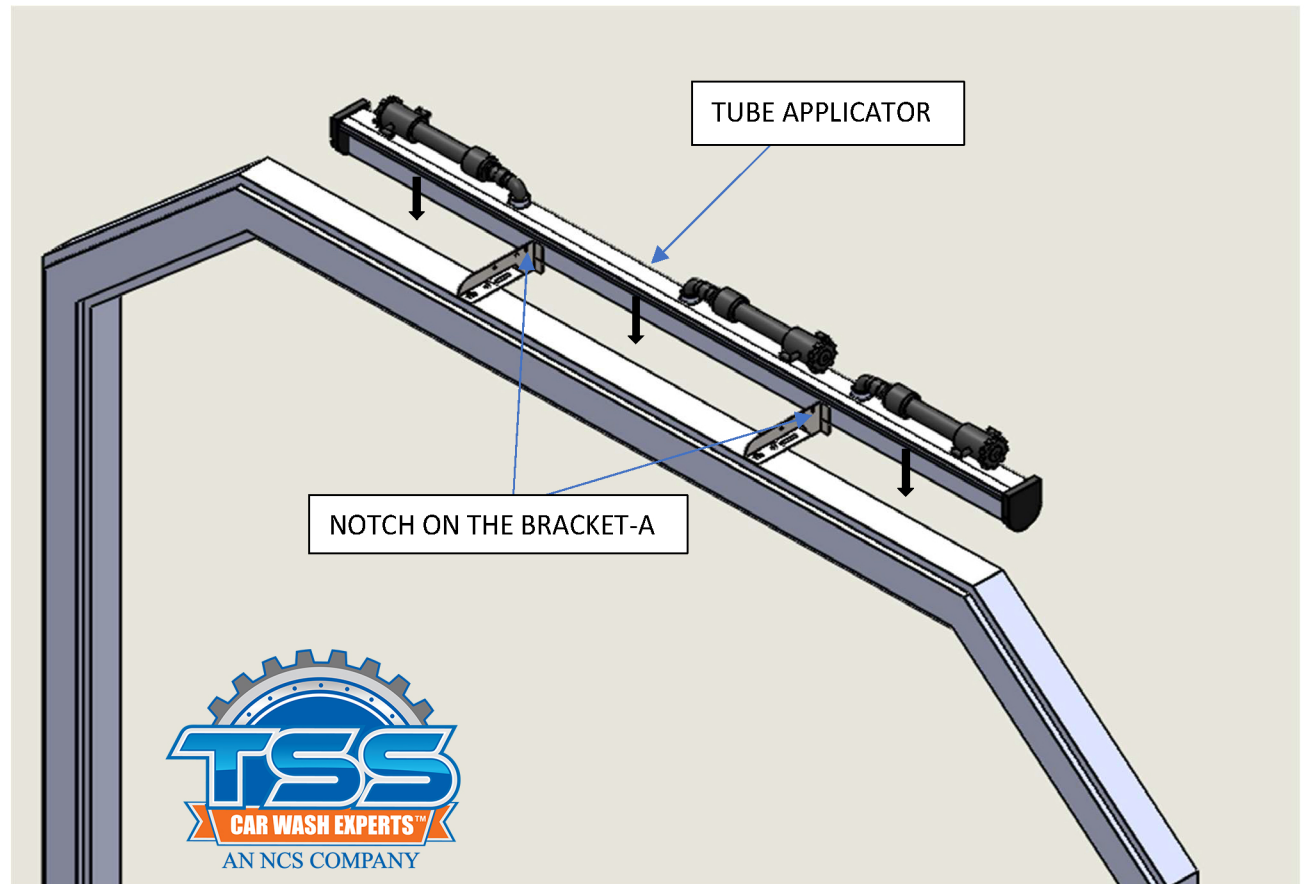
STEP 1: DISASSEMBLE THE BRACKETS A AND BRACKET 2.



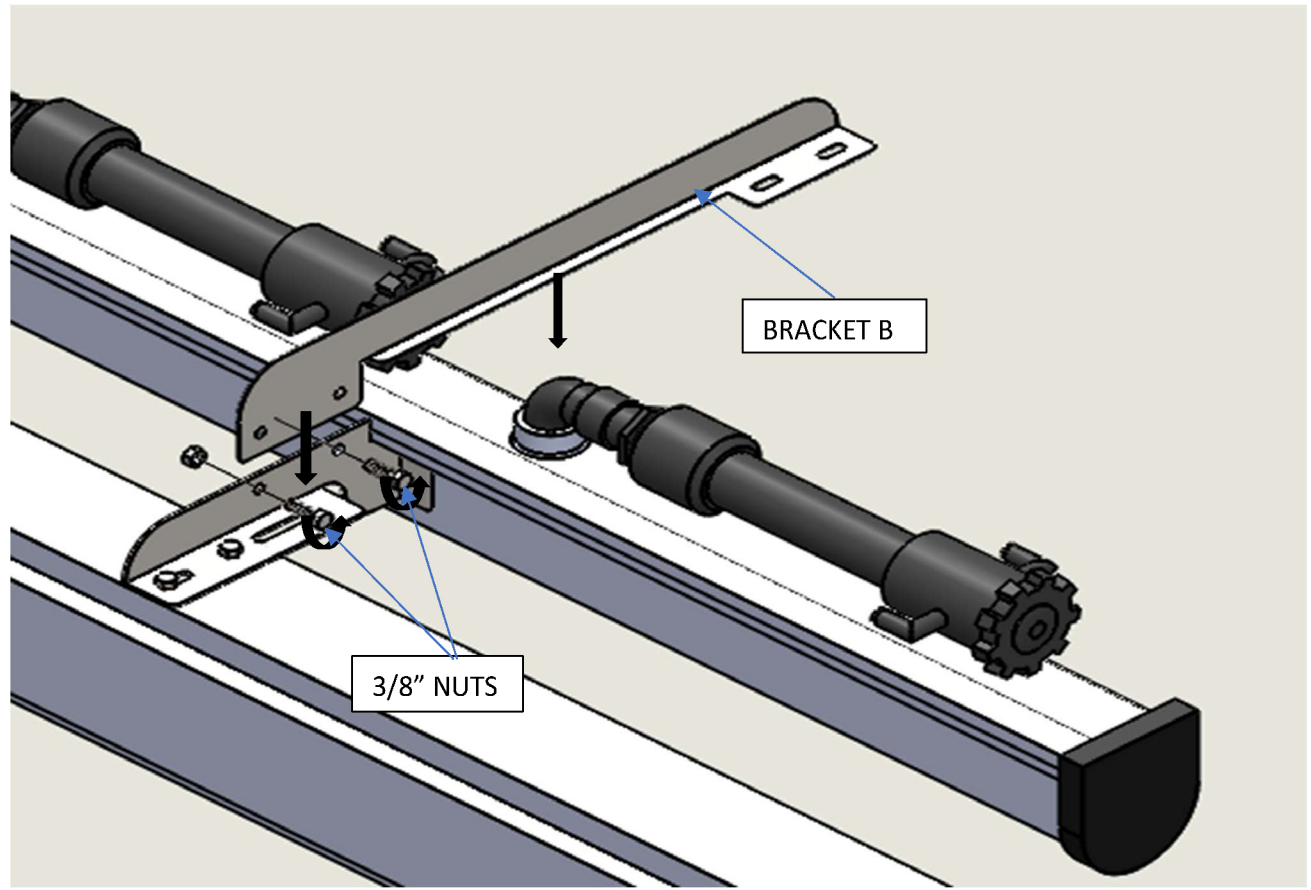
STEP 2: OPEN THE BACK COVER OF THE ARCH AND TIGHTEN THE **BRACKET A** ON TO THE ARCH WITH **3/8" BOLTS**.



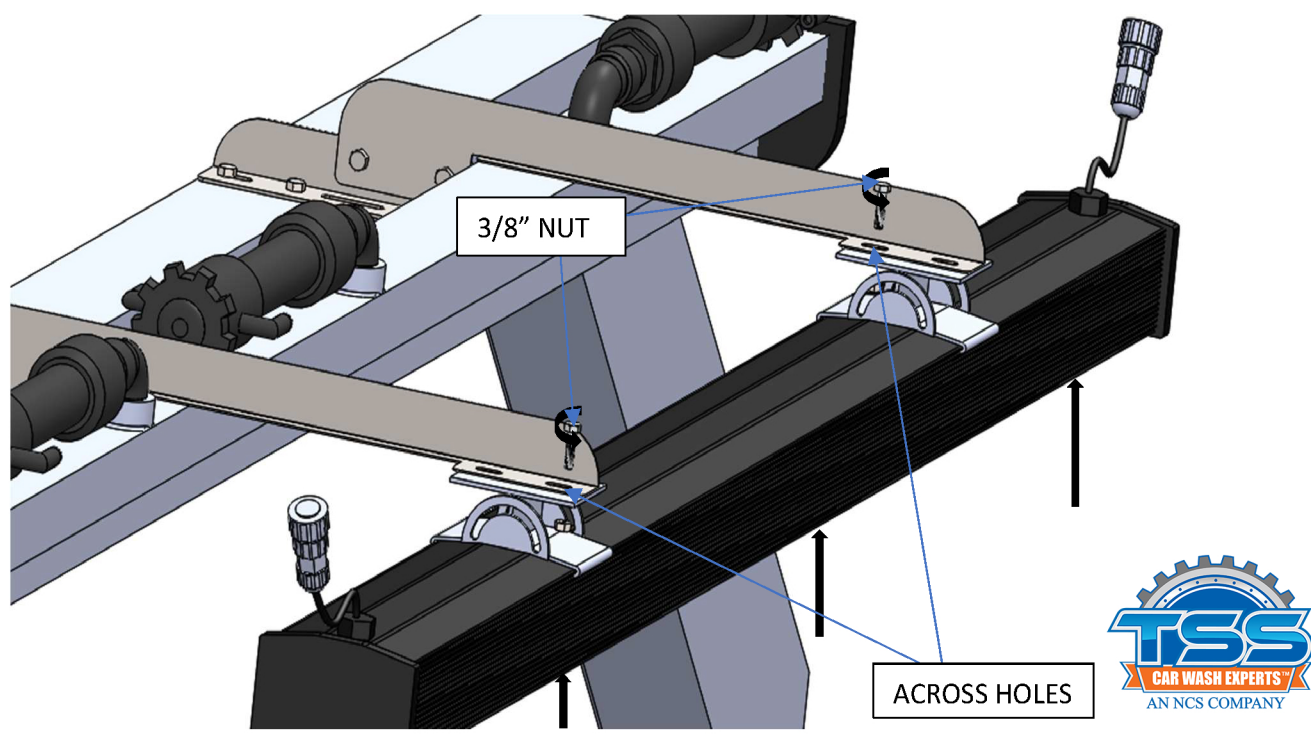
STEP 3: PLACE THE **TUBE APPLICATOR** ON TOP THE **BRACKET A** BY ALIGNING THE NOTCHES.



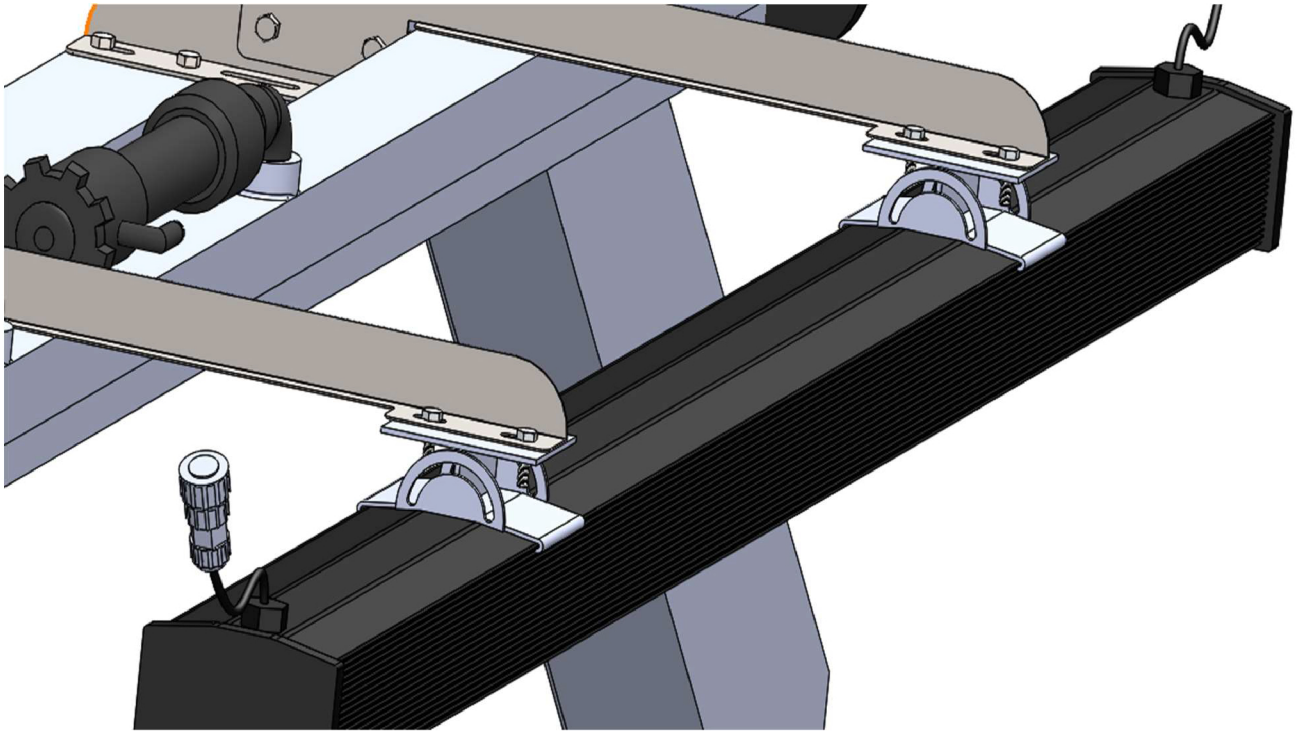
STEP 4: TIGHTEN THE **BRACKET B** ON TOP OF THE **TUBE APPLICATOR** AND MATCHING THE HOLES OF THE **BRACKET A** AND **BRACKET B**.



STEP 5: ALIGN THE HOLES ACROSS OF THE **LED HINGES** AND **BRACKET B** TIGHTEN THE NUT AND BOLTS.



STEP 6: REPEAT THE PROCEDURE BY TIGHTENING THE REMAINING HOLES.



INSTALATION COMPLETE

