

1

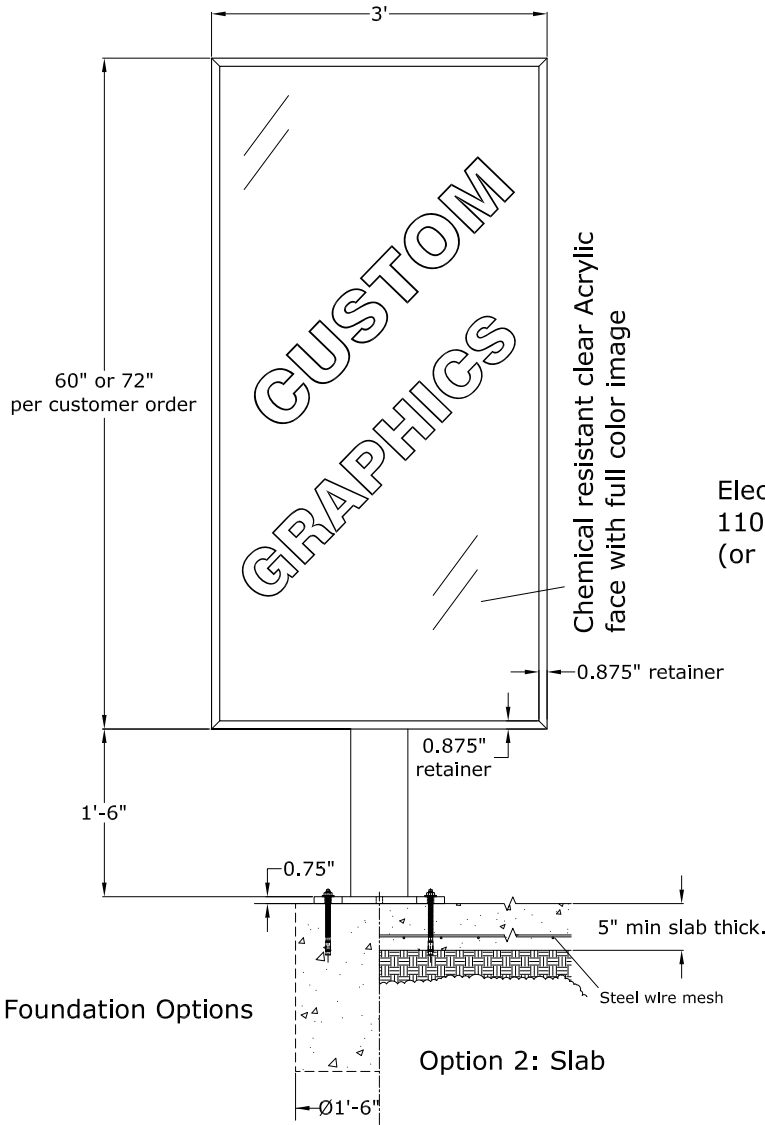
2

3

4

FRONT VIEW

BACK VIEW



Foundation Options

Option 2: Slab

Option 1: Sonotube

Option 1: If reinforced slab is not available:

- Please use 18" diameter Sonotube filled with foundation grade high strength concrete with steel rods enforcement 30" deep or 4" deeper than local frost line.
- Galvanized steel wedge anchors Dia 0.5"x7" long.

Lighting Options

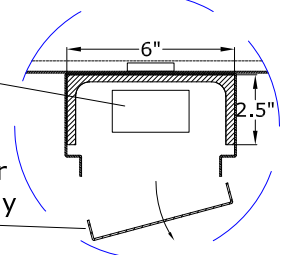
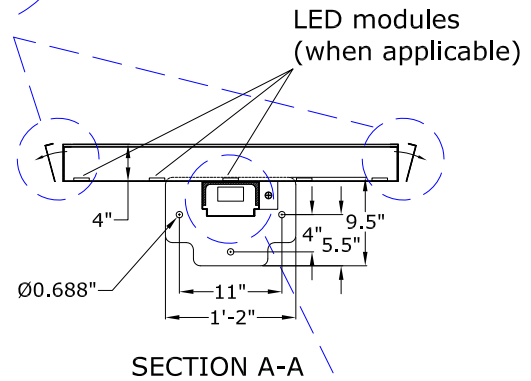
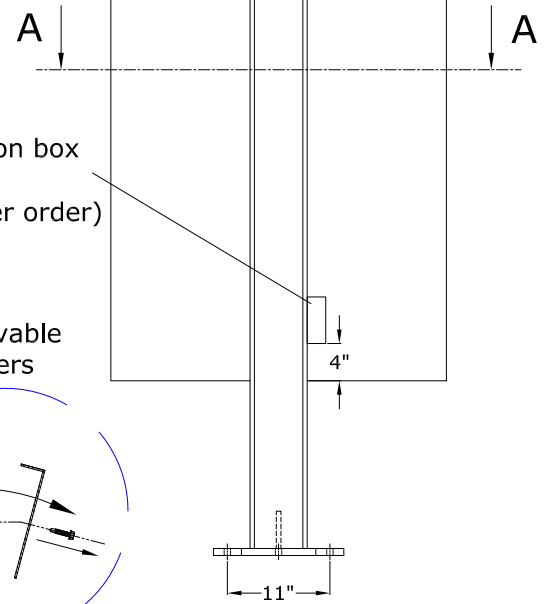
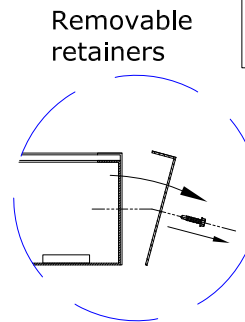


Option 2: Mounting on existing concrete slab:

- Minimum concrete slab thickness 5".
- Slab need to be enforced by steel wire mesh.
- Minimum slab dimension is 8'x3'.
- Galvanized steel wedge anchors Dia 0.5"x7" long.

Power supply (when applicable)

Removable back cover to access power supply



Aluminum used: Structural components are made of Alloy 6061-T6 / Shell is made out of 3105-H14 baked enamel.

	NAME	SIGNATURE	DATE	ACCESSORIES	QTY.
DRAWN	GHA		05/10/13	HLG-240H-12	1
CHK'D	ISM		05/10/13		
APPV'D	ISM		05/10/13		
REV.	1				

REQUIRED POWER:
- 100-240VAC, 4.0AMP



TSS INC.

11450 STEPHENS RD, WARREN, MI 48089 1-800-682-7446 www.tsscws.com

TITLE:
SLIM VERTICAL MENU SIGN

Part Number:
MS3X5
MS3X6



SCALE: 1:20

SHEET 1 OF 1